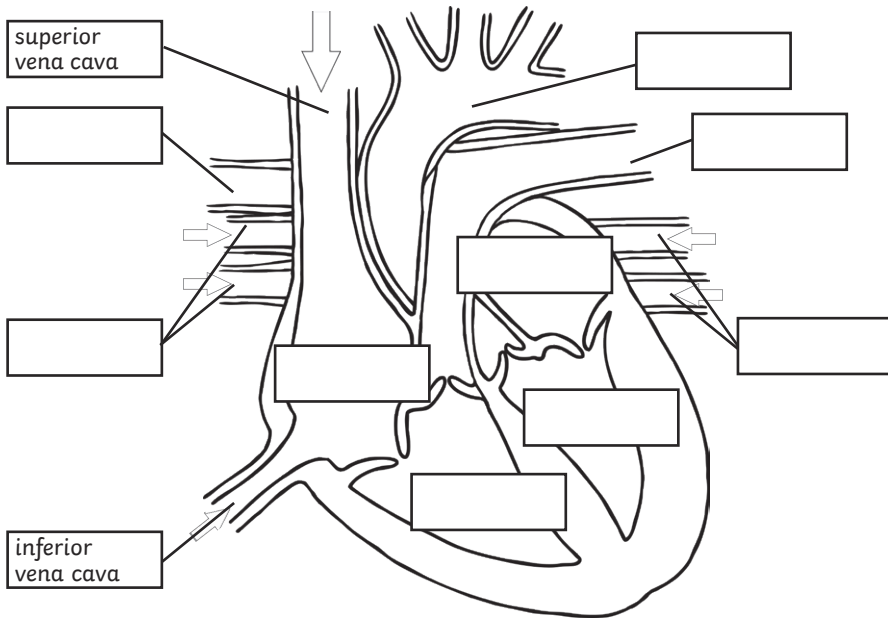


Year 6 Animals Including Humans

Label the parts of the heart. Use the words from the word bank to help you.

pulmonary artery (left) aorta right ventricle
 pulmonary artery (right) left atrium right atrium
 right pulmonary veins left ventricle aortic valve
 left pulmonary veins



Draw a line from each word to its function.

veins

To carry blood **away** from the heart either to the lungs to be reoxygenated or to the rest of the body.

capillaries

To carry blood **to** the heart either from capillaries to be pumped to the lungs to be reoxygenated or from the lungs to be pumped around the body again.

arteries

To allow for the exchange of oxygen and carbon dioxide and nutrients throughout the body.

Name two organs involved with the circulatory system.

_____ and _____.

What are the muscles called that are found in-between each rib?

Year 6 Animals Including Humans

What gas is needed when we inhale?

What gas do we exhale?

Name three ways smoking can affect the body.

- _____

- _____

- _____

Give three benefits of taking regular exercise.

1. _____

2. _____

3. _____

Join up each nutrient to the job it performs in the human body.

carbohydrate

To provide energy.

protein

To keep you healthy.

fat

To help move food around the body.

fibre

To provide energy and keep us warm.

vitamins and minerals

To help us grow and repair.

Year 6 Animals Including Humans

Write **true** or **false** next to each statement.

Nutrients and water are absorbed in the lungs and heart. _____

Nutrients enter the bloodstream via the capillaries where they are passed through to the arteries. _____

The blood is circulated throughout the body (including being oxygenated in the lungs). _____

Nutrients are absorbed by the cells that need them and water is absorbed by all cells. _____

Circle the possible effects of people drinking too much alcohol over a long period of time.

high blood pressure improved brain function addiction

liver damage shallow breathing stomach cancer

Put these parts of the digestive system in the order of which food goes through them:

stomach, small intestine, mouth, rectum, large intestine, oesophagus

1. _____
2. _____
3. _____
4. _____
5. _____
6. _____

Write **true** or **false** next to each statement.

All drugs are illegal. _____

All drugs are harmful. _____

Alcohol, cannabis and nicotine are all drugs. _____

Vaping cigarettes aren't drugs. _____

Vaping cigarettes are totally harmless. _____

Year 6 Animals Including Humans

Fill in the missing letters to work out the terms.

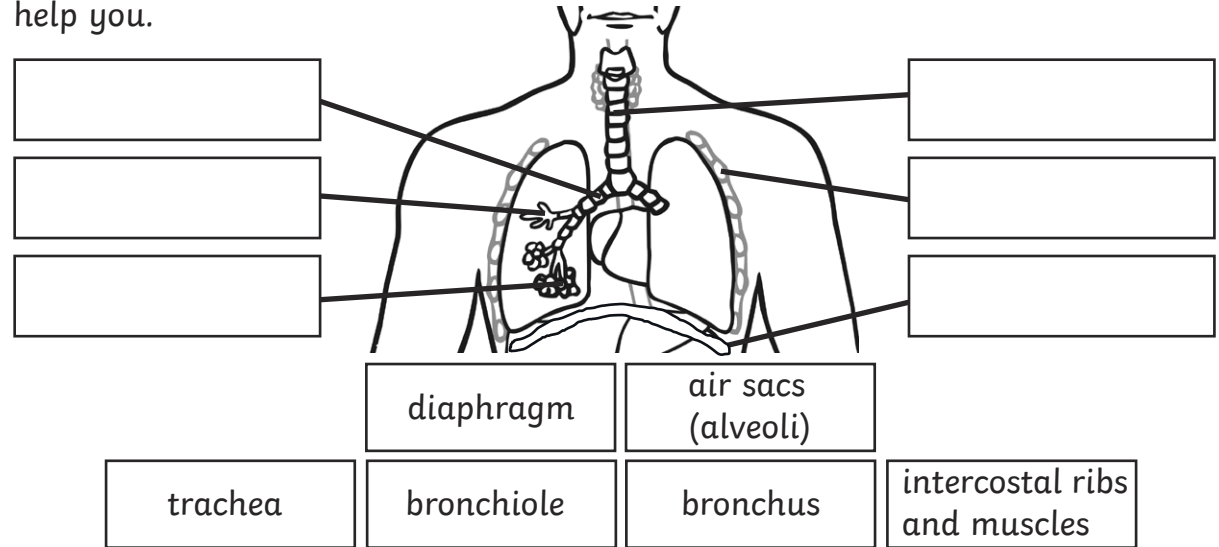
Stomach acids break food down in to:

c_y_e

The place where bile and enzymes break down larger bits of food into smaller parts.

d_o_e_u_

Label the parts of the circulatory system. Use the words from the word bank to help you.



Match the parts of the digestive system with their function.

tongue

oesophagus

pancreas

liver

gall bladder

To transport food to the stomach.

To produce the bile that breaks down fats.

To mix food with saliva so that it can be swallowed.

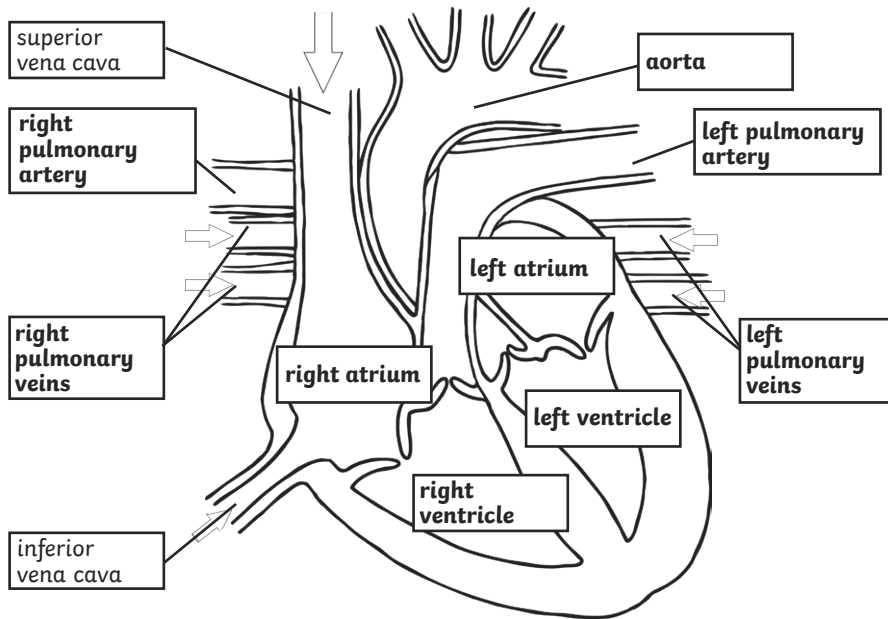
To produce the enzymes that break down fats, carbohydrates and proteins.

To store bile and release it into the duodenum when needed.

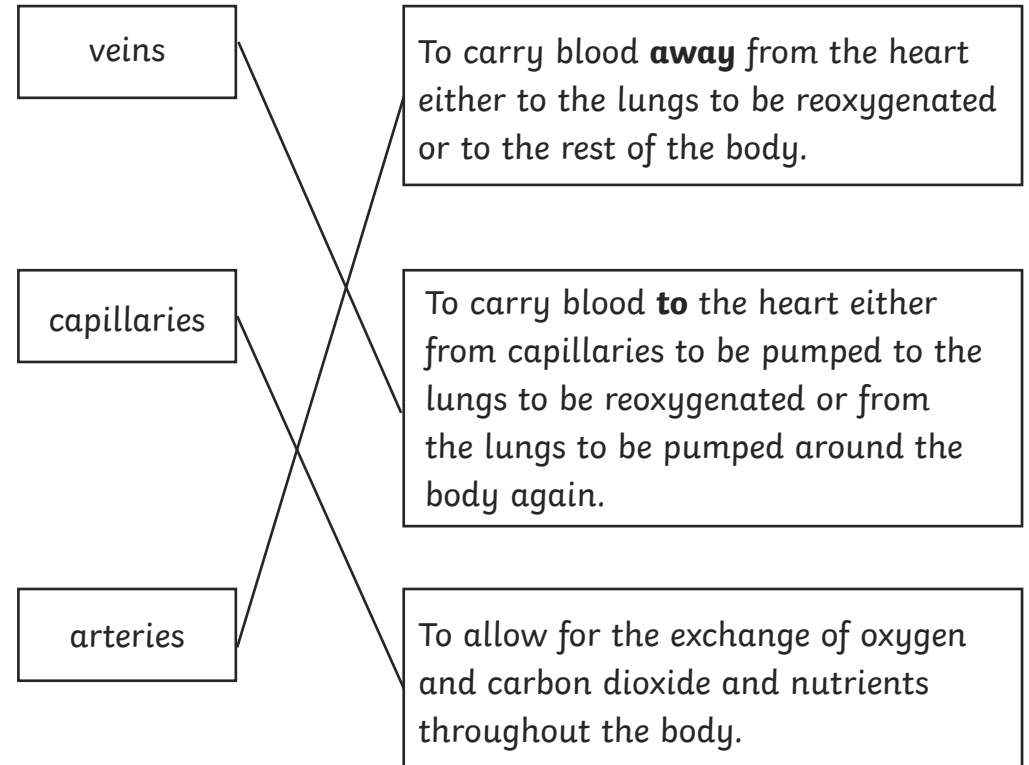
Year 6 Animals Including Humans Answers

Label the parts of the heart. Use the words from the word bank to help you.

pulmonary artery (left) aorta right ventricle
 pulmonary artery (right) left atrium right atrium
 right pulmonary veins left ventricle aortic valve
 left pulmonary veins



Draw a line from each word to its function.



Name two organs involved with the circulatory system.

heart and lungs.

What are the muscles called that are found in-between each rib?

intercostal muscles

Year 6 Animals Including Humans Answers

What gas is needed when we inhale?

oxygen

What gas do we exhale?

carbon dioxide

Name three ways smoking can affect the body.

Answers could include:

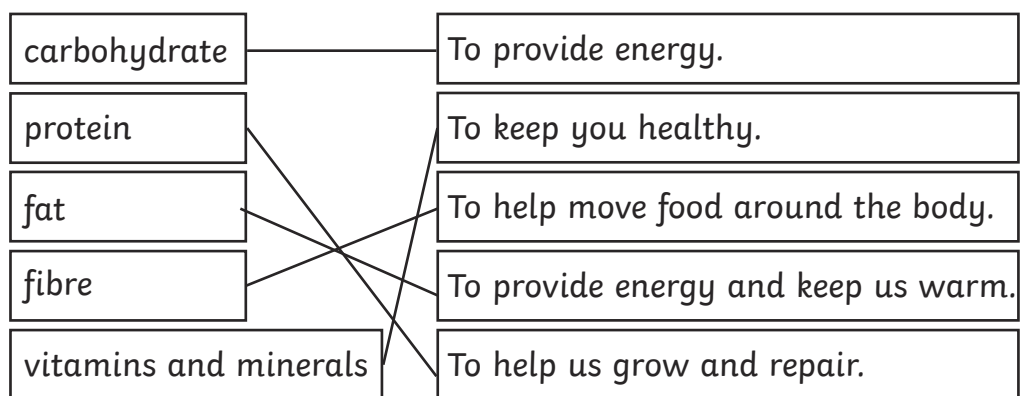
- **smoking can cause high blood pressure**
- **smoking can increase the risk of a heart attack or stroke**
- **smoking can cause cancers, such as lung or mouth cancer**
- **smoking can cause the skin to prematurely age**
- **smoking can weaken bones**

Give three benefits of taking regular exercise.

Answers could include:

- **that it strengthens muscles (including the heart)**
- **it improves circulation**
- **it increases the amount of oxygen going around the body**
- **it releases brain chemicals to make you feel happy/calm**
- **it helps you to sleep better**
- **it strengthens bones**

Join up each nutrient to the job it performs in the human body.



Year 6 Animals Including Humans Answers

Write **true** or **false** next to each statement.

Nutrients and water are absorbed in the lungs and heart. **False**

Nutrients enter the bloodstream via the capillaries where they are passed through to the arteries. **True**

The blood is circulated throughout the body (including being oxygenated in the lungs). **True**

Nutrients are absorbed by the cells that need them and water is absorbed by all cells. **True**

Circle the possible effects of people drinking too much alcohol over a long period of time.

high blood pressure

improved brain function

addiction

liver damage

shallow breathing

stomach cancer

Put these parts of the digestive system in the order of which food goes through them:

stomach, small intestine, mouth, rectum, large intestine, oesophagus

1. **mouth**
2. **oesophagus**
3. **stomach**
4. **small intestine**
5. **large intestine**
6. **rectum**

Write **true** or **false** next to each statement.

All drugs are illegal. **False**

All drugs are harmful. **False**

Alcohol, cannabis and nicotine are all drugs. **True**

Vaping cigarettes aren't drugs. **False**

Vaping cigarettes are totally harmless. **False**

Year 6 Animals Including Humans Answers

Fill in the missing letters to work out the terms.

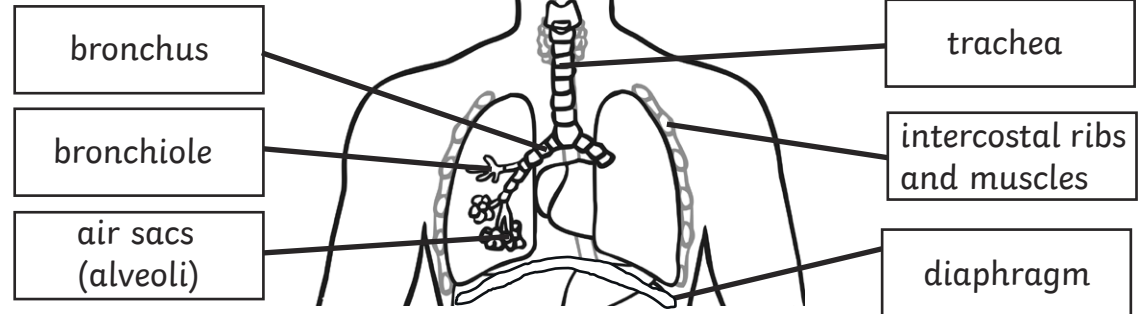
Stomach acids break food down in to:

c h y m e

The place where bile and enzymes break down larger bits of food into smaller parts.

d u o d e n u m

Label the parts of the circulatory system. Use the words from the word bank to help you.



Match the parts of the digestive system with their function.

